



SANDIP
UNIVERSITY
UGC | NAAC
RECOGNISED | GRADE **A**
Under Section 2(f) & 12(B) of UGC

SOET

SCHOOL OF ENGINEERING
& TECHNOLOGY

*Empowering Engineers
Towards Limitless Potential*

www.sandipuniversity.edu.in

Toll-Free : 1800-212-2714

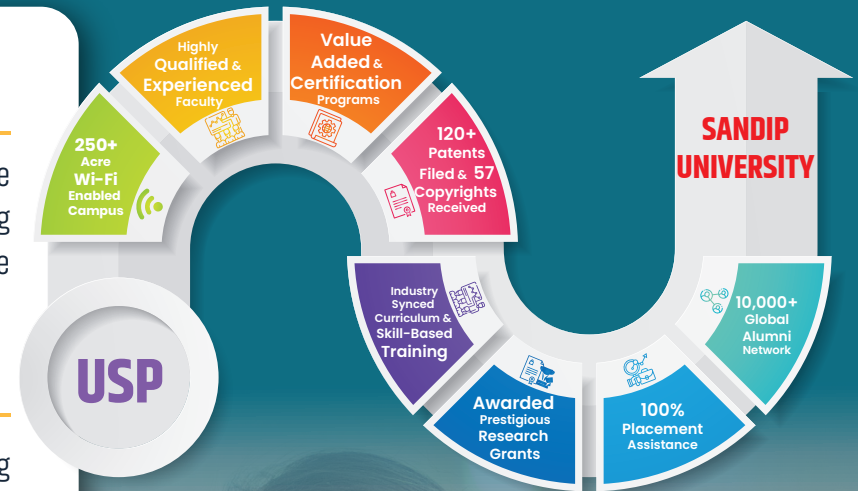
ABOUT SANDIP UNIVERSITY Industry Leaders Award 2022

Sandip University is a cutting-edge hub of futuristic education. Here, students are trained to become innovative thinkers and creators in a fast-paced industry. Sandip University's School of Engineering and Technology is a world class institution of engineering studies where students receive globally-recognised education.

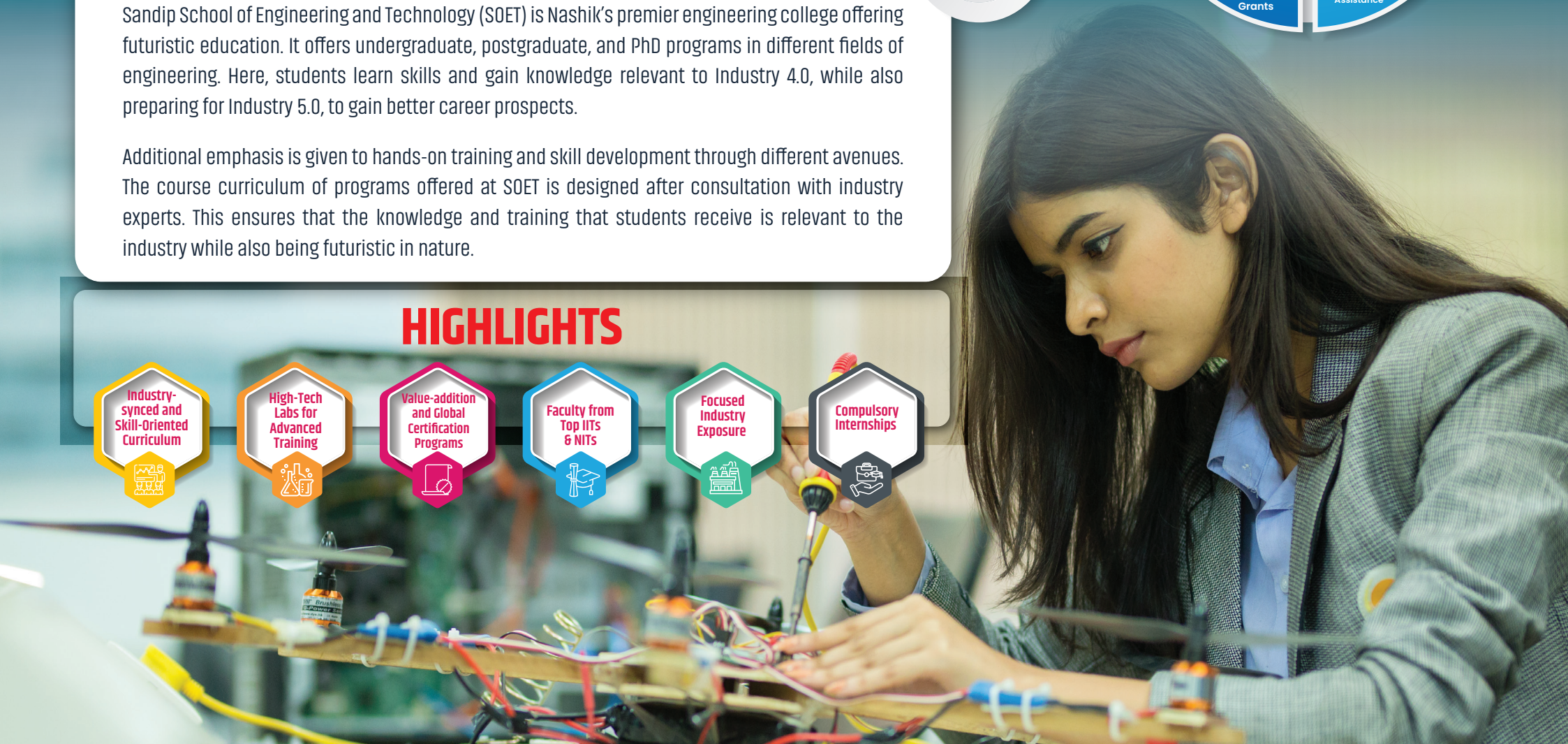
ABOUT SOET

Sandip School of Engineering and Technology (SOET) is Nashik's premier engineering college offering futuristic education. It offers undergraduate, postgraduate, and PhD programs in different fields of engineering. Here, students learn skills and gain knowledge relevant to Industry 4.0, while also preparing for Industry 5.0, to gain better career prospects.

Additional emphasis is given to hands-on training and skill development through different avenues. The course curriculum of programs offered at SOET is designed after consultation with industry experts. This ensures that the knowledge and training that students receive is relevant to the industry while also being futuristic in nature.



HIGHLIGHTS



CHAIRMAN'S MESSAGE

“ As a young student, selecting a university to pursue higher education from can be a daunting task. Your university will be your home and family for the next few years, and will constantly bring life-altering experiences and opportunities to you that will shape your future.

What attracts students to Sandip University from across India and the globe is the fact that we are unwaveringly dedicated to enhancing your student experience through world-class infrastructure, well-qualified faculty, and exemplary teaching facilities.

Our reputation is steeped in serving career-oriented students finding their niche in life. At Sandip University our vision and mission are perfectly aligned to the Digital India and Skill India initiatives of the Government of India.

We look forward to seeing you at Sandip University. ”

DEAN'S MESSAGE

“ Welcome to Sandip University School of Engineering and Technology! SOET is a truly a vibrant community where aspirant students prepare themselves to be responsible leaders and lifelong learners through a rigorous engineering education in a liberal environment, mentored by a world-class faculty dedicated to the education of next generation leaders and the creation of knowledge for the betterment of humanity.

In line with the established essence of the University, the School of Engineering and Technology has adopted a basic policy of "contributing to society through engineering, an area of education that pursues to make life happier and more affluent." I am confident that you will be able to carve a unique career path for yourself at SOET! ”

DR. SANDIP JHA

CHAIRMAN,
SANDIP UNIVERSITY,
NASHIK



PROGRAMS OFFERED

UNDERGRADUATE PROGRAMS

- **B.Tech** Aerospace Engineering
- **B.Tech** Aeronautical Engineering
- **B.Tech** Civil Engineering
- **B.Tech** Electrical Engineering
- **B.Tech** Electronics & Telecommunication Engineering
- **B.Tech** Mechanical Engineering
- **B.Tech** Biotechnology

DIRECT SECOND YEAR LATERAL ENTRY

UNDERGRADUATE PROGRAMS

- **B.Tech** Aerospace Engineering
- **B.Tech** Civil Engineering
- **B.Tech** Electrical Engineering
- **B.Tech** Electronics & Telecommunication Engineering
- **B.Tech** Mechanical Engineering

ELIGIBILITY CRITERIA

B.TECH PROGRAMS: FIRST YEAR ENTRY | DURATION: 4 YEARS

10+2 or its equivalent qualification with Physics and Mathematics as compulsory subjects along with Chemistry or Biotechnology or Biology or Technical or Vocational subjects; with minimum 45% aggregate marks (minimum 40% marks, in case of Backward class categories and persons with disability candidates)

OR

3-year Diploma in Engineering and Technology with minimum 50% aggregate marks (at least 45% marks, in case of Backward class categories and Persons with Disability candidates)

OR

B.Sc. degree from a UGC-recognised university with minimum 50% aggregate marks (at least 45% marks, in case of Backward class categories and Persons with Disability candidates)

Obtained score in SU-JEE/MH-CET/JEE Main conducted by a Competent Authority.

B.TECH PROGRAMS: DIRECT SECOND YEAR LATERAL ENTRY

DURATION: 3 YEARS

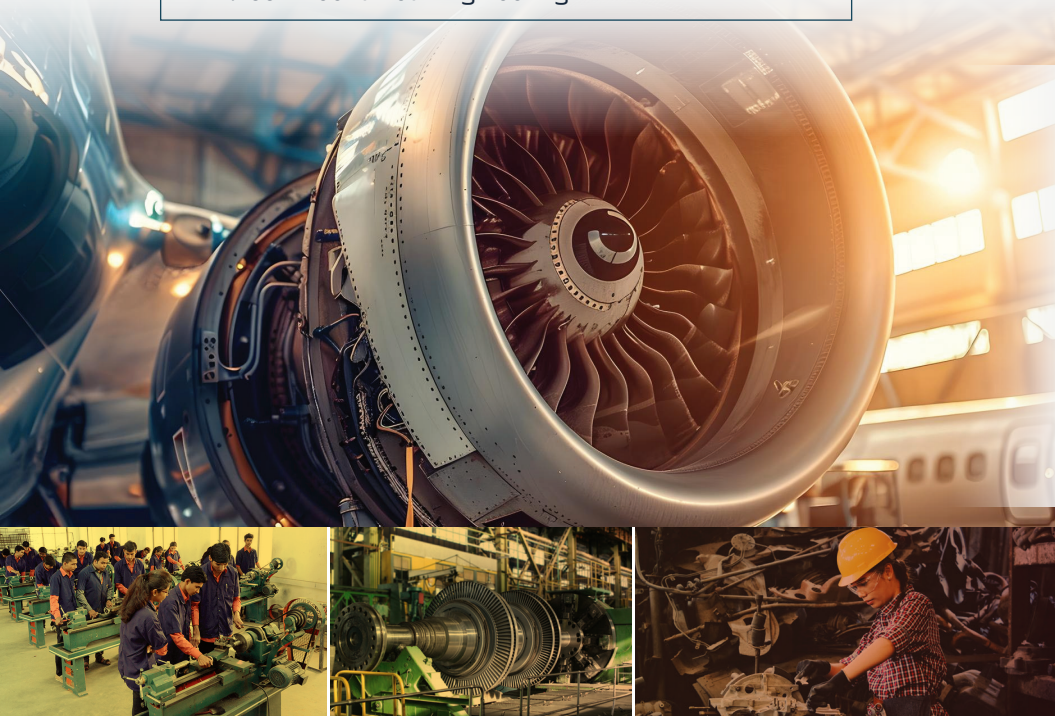
Diploma in Engineering with minimum 45% aggregate marks (minimum 40% marks, in case of Backward Class categories and Persons with Disability candidates) in appropriate branch of Engineering and Technology

OR

B.Sc. degree from a UGC-recognised university recognised with minimum 45% aggregate marks (minimum 40% marks, in case of Backward Class categories and persons with disability candidates) and 10+2 with Mathematics as a subject; students belonging to B.Sc. Stream, shall clear the subjects Engineering Graphics/Engineering Drawing and Engineering Mechanics of the First Year Engineering Program along with the Second year subjects; students belonging to B.Sc. stream shall be considered only after filling the supernumerary seats in this category with students belonging to the Diploma stream.

UG PROGRAM OUTCOME

- Advanced skill development through high-tech labs
- A deeper understanding of the study material
- Development of strong interpersonal skills
- Additional focus on overall personality and skill development
- Exposure to global industries through extracurricular activities
- Compulsory internships for real-world work experience
- Development of critical, creative, and analytical thinking



POSTGRADUATE COURSES

- **M.Tech** Civil Engineering
(Construction Management, Environmental Engineering, Structural Engineering, Transportation Engineering & Planning, Water Resources Engineering, Geotechnical & Geoenvironmental Engineering)
- **M. Tech** Valuation Civil (Land & Building)
- **M.Tech** Mechanical Engineering (Design Engineering)
- **M.Tech** Electrical Engineering (Electrical Power System)
- **M.Tech** Electrical Vehicles
- Master of Planning (Town & Country Planning)

ELIGIBILITY CRITERIA

M.TECH PROGRAMS | DURATION : 2 YEARS

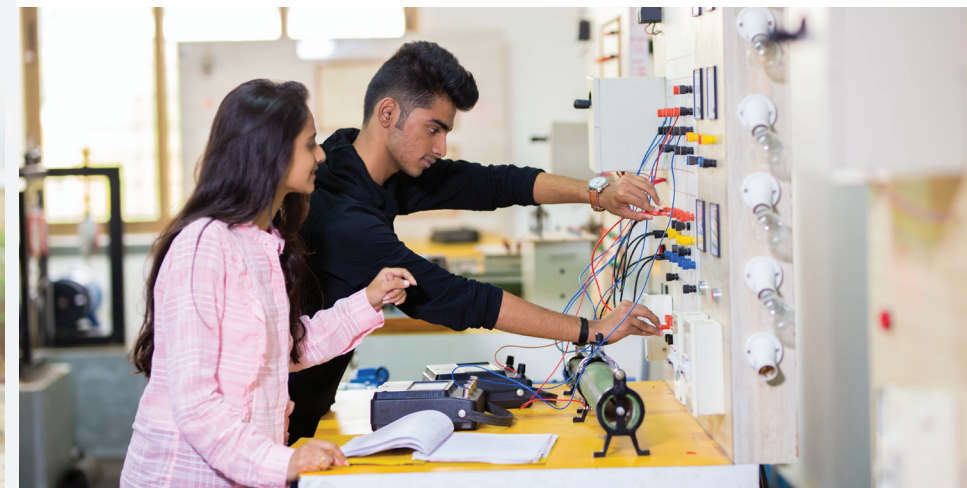
B.E./B.Tech in the relevant field from UGC approved universities or its equivalent qualification with minimum 50% aggregate marks, and obtained a score in Graduates Aptitude Test in Engineering (GATE)/any other relevant entrance tests; For sponsored candidates, a minimum of two years of full-time work experience in a Registered Firm/Company/Industry/Educational and/or Research Institute/any Government Department or Government Autonomous Organisation in the relevant field in which admission is being sought is necessary.

PG PROGRAM OUTCOME

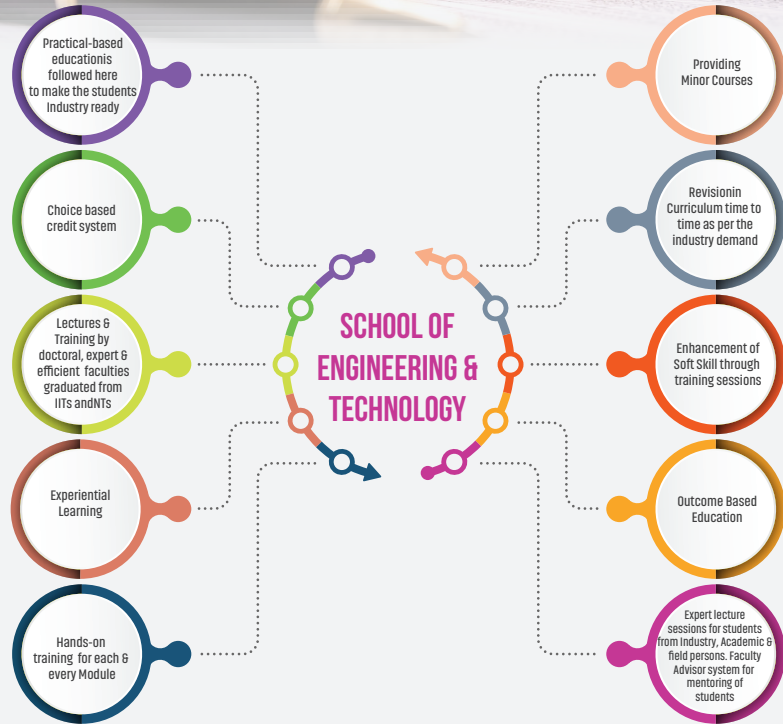
- Advanced understanding of study material
- Training in high-tech labs for better skill building
- Research-based pedagogy and training
- Focus on overall student development
- Interaction with industry experts for industry exposure
- Globally-recognised qualifications for wider career opportunities

PH.D PROGRAMMES

Mechanical Engineering | Civil Engineering | Aero Engineering
Electrical & Electronics Engineering



USP



VALUE ADDITION & GLOBAL CERTIFICATION PROGRAMS

These are the value addition and global certification programs integrated into the course curriculum for various programs at SOET. These programs are designed to help students gain the right skills and training in their respective field of study.

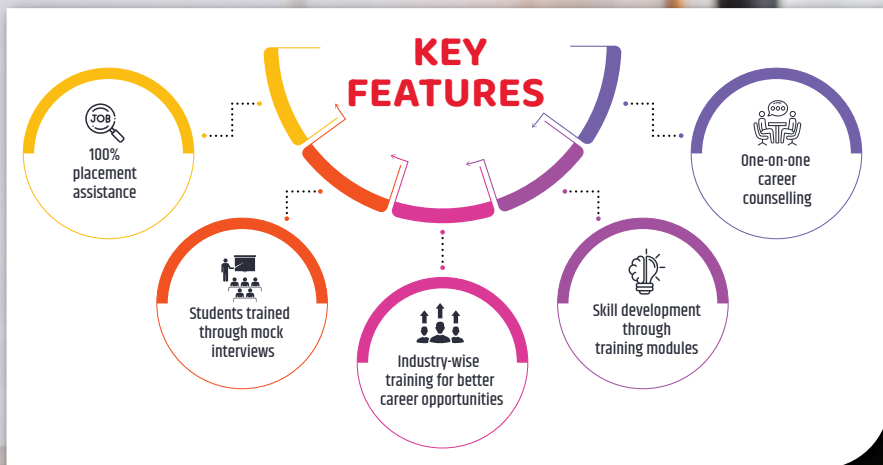
COURSE NAME	VALUE ADDITION PROGRAMS	CERTIFICATION PROGRAMS	SKILL DEVELOPMENT PROGRAMS
Aero Engineering	AUTOCAD	Solid Work	Python
	CATIA	Fluent	Post Processing Software
	ANSYS	Hypermesh	Latex
Civil Engineering	AUTOCAD	Concrete Mix Design Using Software	Planning of Structures
	Revit Architecture	Structural Foundation Analysis	Advanced MS Excel
	STADD Pro	Estimation of Structure	Building Hands in Training
Mechanical Engineering	Solid Modelling & Drafting	Welding Technology	IC Engine Maintenance
	Python Programming	CAD & Digital Manufacturing	Electric Vehicle Fault Finding & Diagnosis
	Finite Element Analysis	Industrial Automation	Welding Technology Defect Detection
Electrical Engineering	Testing of Electrical Components	Python Programming	Maintenance and Repair of Home Appliances
	Introduction to EV Technology	Applications of MATLAB	Fault Finding in Motor and Transformer
	Design of Solar Plant	Designing with Electrical CAD	Introduction to Substation Maintenance
E&TC Engineering	Identification and Testing of Electronic Components and Devices	Advanced C and C++ Programming	PC Assembly and OS Installation
	IoT Architecture and Protocols	Cyber Security	Arduino Programming & Interfacing
	Database Design and Programming with SQL	Cloud Technologies	VLSI Front End Verification

PLACEMENTS AT SANDIP UNIVERSITY

Students from SCHOOL OF ENGINEERING & TECHNOLOGY
PLACED AT TOP PLACEMENT PARTNERS

 KUNAL PATIL Property Pistol (8.40 LPA)	 SANJEEV PANDIT Property Pistol (8.40 LPA)	 SALONI JANGALE Property Pistol (8.40 LPA)	 SANDIP KAPSE ABB (8 LPA)
 SHUBHAM VISHWAKARMA Federal Bank (6 LPA)	 KRISHNA BORSE HFCC India Ltd. (5.25 LPA)	 PRATIKA BHALERAO HFCC India Ltd. (5.25 LPA)	 VAISHNAVI TRIBHUWAN CapGemini (5.05 LPA)
 DIPAK KORDE BYJU'S (5 LPA)	 BISWAJEET ROY JNK India Limited (5 LPA)	 NIRMAL PATIL Cognizant (5 LPA)	And many more...

OVER 150 COMPANIES PARTICIPATE in OUR ANNUAL PLACEMENT DRIVES





SCHOOL OF ENGINEERING AND TECHNOLOGY

Nashik Camus

Mahiravani, Trimbak Road, Nashik, Maharashtra - 422 213

Sijoul Campus

Neelam Vidyavihar, Sijoul, P.O. Mailam, Madhubani, Bihar - 847 235

Corporate Office: Manisha Pride CHS LTD, 1st Floor, J.N. Road, Mulund (W), Mumbai - 400 080